

# THK-NC304-VDZ

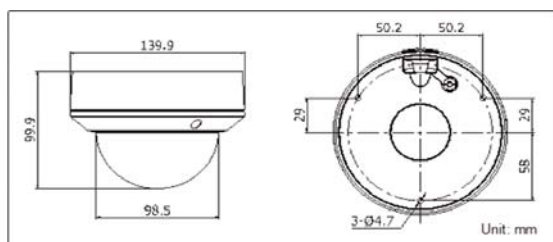
## 4MP WDR MOTORIZED DOME NETWORK CAMERA



### KEY FEATURES

- ◆ 120dB WDR
- ◆ 3D DNR
- ◆ Motorized lens 2.8~12mm
- ◆ Up to 30m IR range
- ◆ Built-in Micro SD/SDHC/SDXC card slot, up to 128GB
- ◆ Audio/alarm I/O
- ◆ Mobile Monitoring via EZVIZ P2P or iVMS-4500
- ◆ 12V DC  $\pm 10\%$  & PoE(802.3af)
- ◆ Support H.264+
- ◆ IP66
- ◆ IK10
- ◆ 1/3" Progressive Scan CMOS
- ◆ Up to 4 megapixel resolution

### DIMENSIONS



THK-NC304VDZ	
Image Sensor	1/3" Progressive Scan CMOS
Min. Illumination	0.01Lux @ (F1.2, AGC ON) , 0.014Lux @ (F1.4, AGC ON), 0 Lux with IR
Shutter Speed	1/3s ~ 1/10,000s
Slow Shutter	Support
Lens	2.8mm-12mm @ F1.4, motorized lens
Angle Adjustment	Pan: 0°~ 355°, Tilt: 0°~ 75°, Rotation: 0°~ 355°
Lens Mount	Φ14
Day & Night	IR cut filter with auto switch
WDR	120dB
Compression	
Video Compression	H.264/MJPEG/ H.264+
H.264 Type	Main Profile
Video Bit Rate	32 Kbps ~16 Mbps
Audio (-S)	G.711/G.722.1/G.726/MP2L2, 64Kbps (G.711) / 16Kbps (G.722.1) / 16Kbps (G.726) / 32-128Kbps (MP2L2)
Image	
Max. Resolution	2688×1520
Frame Rate	50Hz: 20fps (2688×1520), 25fps(1920×1080), 25fps(1280×720) 60Hz: 20fps (2688×1520), 30fps (1920×1080), 30fps(1280×720)
Enhancement	BLC/3D, DNR/ROI
Image Setting	Rotate mode, Saturation, Brightness, Contrast, Sharpness adjustable by client software or web browser
Day/Night Switch	Auto / Schedule / Triggered by Alarm In
Network	
Network Storage	NAS (Support NFS,SMB/CIFS): ANR, Built-in Micro SD/SDHC/SDXC card slot, up to 128GB
Alarm Trigger	Intrusion Detection, Line Crossing detection, Motion detection, Dynamic analysis, Tampering alarm, Network disconnect, IP address conflict, Storage exception
Protocols	TCP/IP, UDP, ICMP, HTTP, HTTPS, FTP, DHCP, DNS, DDNS, RTP, RTSP, RTCP, PPPoE, NTP, UPnP, SMTP, SNMP, IGMP, 802.1X, QoS, IPv6, Bonjour
Security	One-key reset, Flash-prevention, dual stream, heartbeat, mirror, password protection, privacy mask, watermark, IP address filtering, Anonymous access
Standard	ONVIF(PROFILE S,PROFILE G),PSIA,CGI,ISAPI
General	
Interface	1 RJ45 10M/100M Ethernet interface
Operating Conditions	-30 °C ~60 °C (-22 °F - 140 °F), Humidity 95% or less (non-condensing)
Power Supply	DC12V $\pm 10\%$ , PoE (802.3af)
Power Consumption	Max. 5.5W
Ingress Protection Level	IP66
Impact Protection	IEC60068-275Eh, 20J; EN50102, up to IK10
IR Range	20~30 meters
Dimensions	Φ 140 × 99.9 mm (Φ 5.51" × 3.94")
Weight	1000g (2.20lbs)

CMS (Remote Viewing Apps) ..... iVMS 4200 (PC / MAC)

Mobile App ..... Guarding Expert (ANDROID / iOS)