

# THK-NC304-VDA

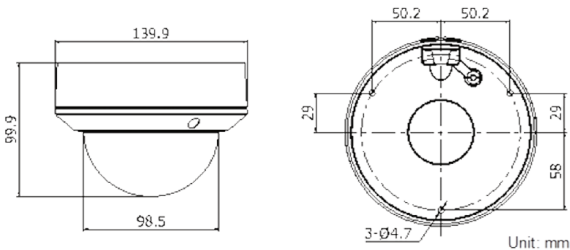
## 4MP WDR VARIFOCAL DOME NETWORK CAMERA



### KEY FEATURES

- Up to 4 megapixel resolution
- 120dB WDR, 3D DNR
- Motorized lens 2.8~12mm (-Z)
- Up to 30 meters IR range
- IP66 Weather-proof protection
- 12V DC  $\pm 10\%$  & PoE(802.3af)
- Built-in Micro SD/SDHC/SDXC card slot, up to 128GB
- Audio/alarm I/O (-S)
- Mobile Monitoring via EZVIZ P2P or iVMS

### DIMENSIONS



THK-NC304-VDA		
Camera	Image Sensor	1/3" Progressive Scan CMOS
	Min. Illumination	0.01Lux @ (F1.2, AGC ON) , 0.014Lux @ (F1.4, AGC ON), 0 Lux with IR
	Shutter Speed	1/3s to 1/10,000s
	Slow Shutter	Support
	Lens	2.8mm-12mm @ F1.4
	3-Axis Adjustment	Pan: 0°~ 355°, Tilt: 0°~ 75°, Rotation: 0°~ 355°
	Lens Mount	Ø14
	Day & Night	IR cut filter with auto switch
	Wide Dynamic Range	120dB
Compression	Video Compression	H.264/MJPEG
	Compression Type	Main Profile
	Video Bit Rate	256 Kbps ~16 Mbps
	Audio (-S)	G.711/G.722.1/G.726/MP2L2, 64Kbps (G.711) / 16Kbps (G.722.1) / 16Kbps (G.726) / 32-128Kbps (MP2L2)
Image	Max Resolution	2688x1520, 2688x1520
	Frame Rate	50Hz: 20fps (2688x1520), 25fps (1920x1080), 25fps (1280x720) 60Hz: 20fps (2688x1520), 30fps (1920x1080), 30fps (1280x720)
	Image Enhancement	BLC /3D, DNR/ROI
	Image Setting	Rotate mode, saturation, brightness, contrast, sharpness adjustable by client software or web browser
	Day/Night Switch	Auto / Schedule / Triggered by Alarm in
Network	Network Storage	NAS (Support NFS,SMB/CIFS); ANR, Built-in Micro SD/SDHC/SDXC card slot, up to 128GB
	Alarm Trigger	Intrusion Detection, Line Crossing detection, Motion detection, Dynamic analysis, Tampering alarm, Network disconnect, IP address conflict, Storage exception
	Protocols	TCP/IP, UDP, ICMP, HTTP, HTTPS, FTP, DHCP, DNS, DDNS, RTP, RTSP, RTCP, PPPoE, NTP, UPnP, SMTP, SNMP, IGMP, 802.1X, QoS, IPv6, Bonjour
	Security	One-key reset, Flash-prevention, dual stream, heartbeat, mirror, watermark, password protection, privacy mask, IP address filtering, Anonymous access
	Standard	ONVIF (PROFILE S, PROFILE G), PSIA, CGI, ISAPI
General	Interface	1 RJ45 10M/100M Ethernet interface
	Operating Conditions	-30 °C ~60 °C (-22 °F ~ 140 °F), Humidity 95% or less (non-condensing)
	Power Supply	DC12V $\pm 10\%$ , PoE (802.3af)
	Power Consumption	Max. 5.5W
	Ingress Protection Level	IP66
	Impact Protection	IEC60068-275Eh, 20J; EN50102, up to IK10
	IR Range	10 ~ 20m (32 ~ 64ft)
	Dimensions	Ø 140 × 99.9 mm (Ø 5.51" × 3.94")