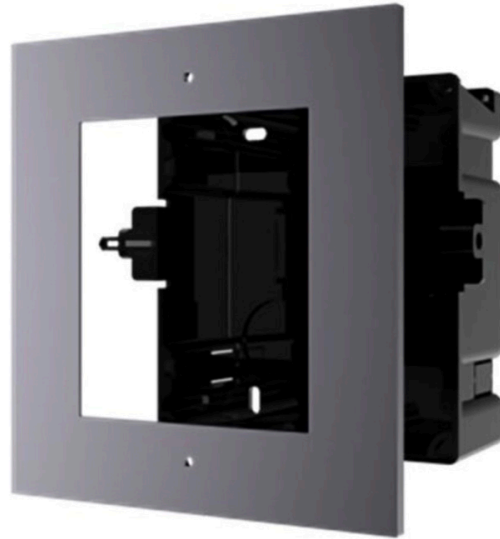


Flush Mounting Accessory for Modular Door Station



MODEL **DS-KD-ACF1/Plastic**

KEY FEATURES

- Contains gang box, cover, screws, lines, etc.
- Adapts to one-module flush mounting

SPECIFICATIONS

Model	DS-KD-ACF1/PLASTIC
General	
Material (Cover)	Aviation Aluminum
Material (Gang box)	Plastic
Working temperature	-40° F to 140° F
Working humidity	10% to 95%
Dimensions (Cover)	5.28" x 4.88" x 0.16"
Dimensions (Gang Box)	5.28" x 5.31" x 2.20"