

**WATERPROOF
SCRATCH RESISTANT
SUN PROOF**

PT-PB-25

LED

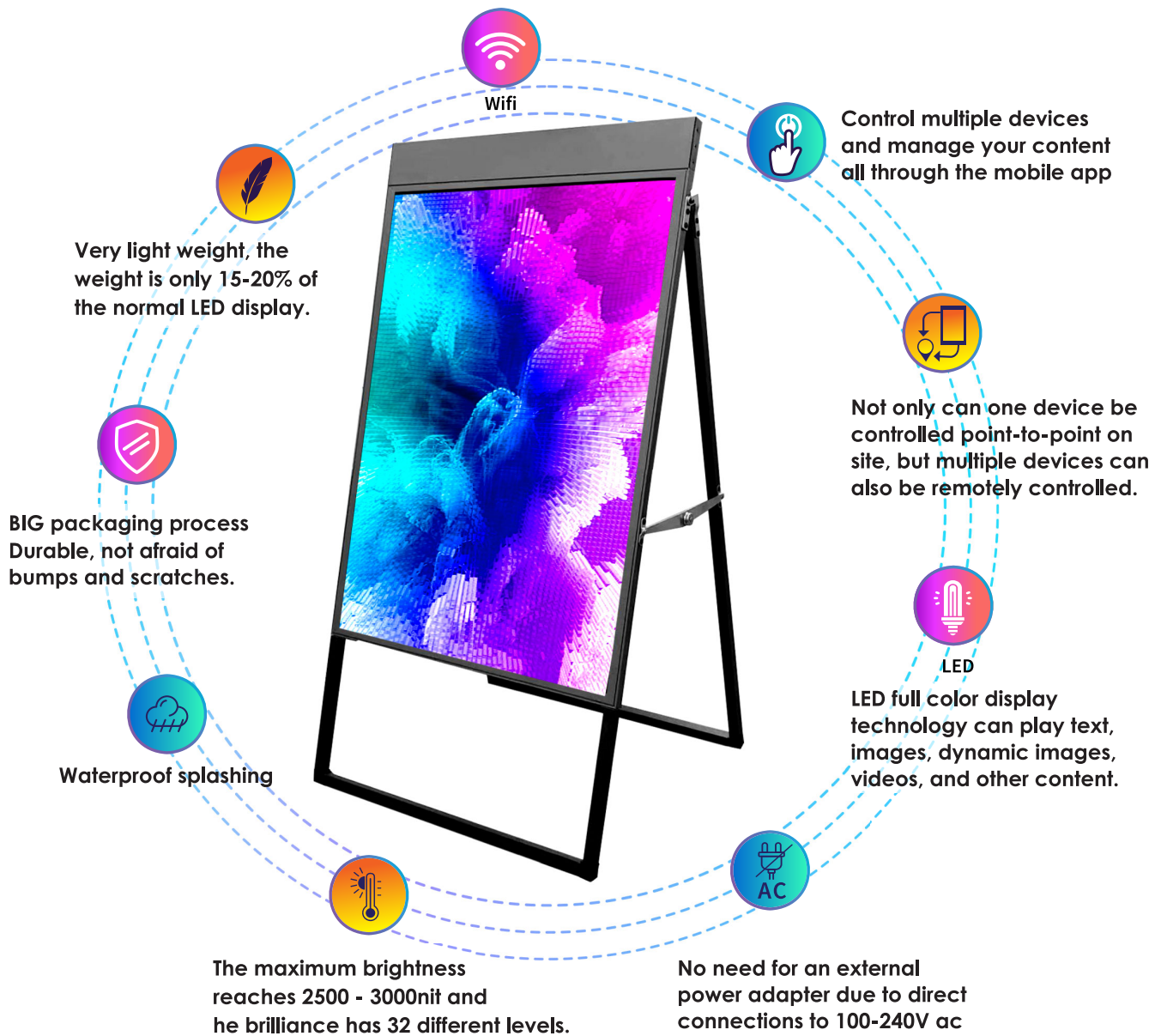
Digital Poster Board
Super slim & super light

IOT

Display devices based
on IoT technology.

APP

Wireless control of
devices through an APP



PT-PB-25



MODEL	PT-PB-25
Pixel pitch	0.098 inch
Display Matrix	224×320 dots
Dimensions	23.7×36.2 inch
Brightness	2500-3000 nits
IP rating	IP 65
Weight	13.3 lbs
Input	AC100-240V
Power consumption	Max. 200 Avg. 70
RAM	8 G

Application environment: Outdoor

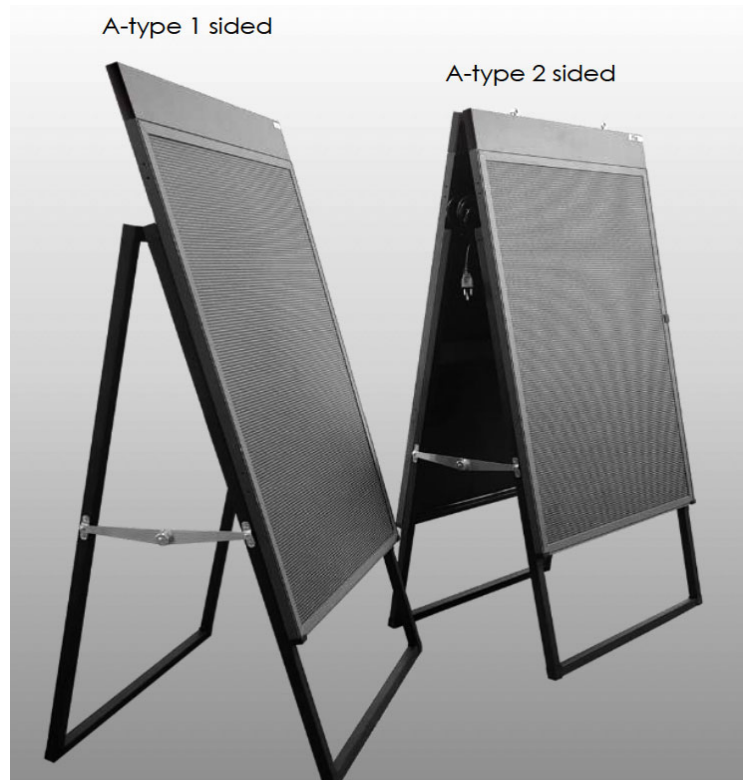


Usage : Hanging(Standard)



Get ready to transform your business's visual presence with this state-of-the-art display solution, designed to captivate and engage your audience like never before.

Usage : Bracket

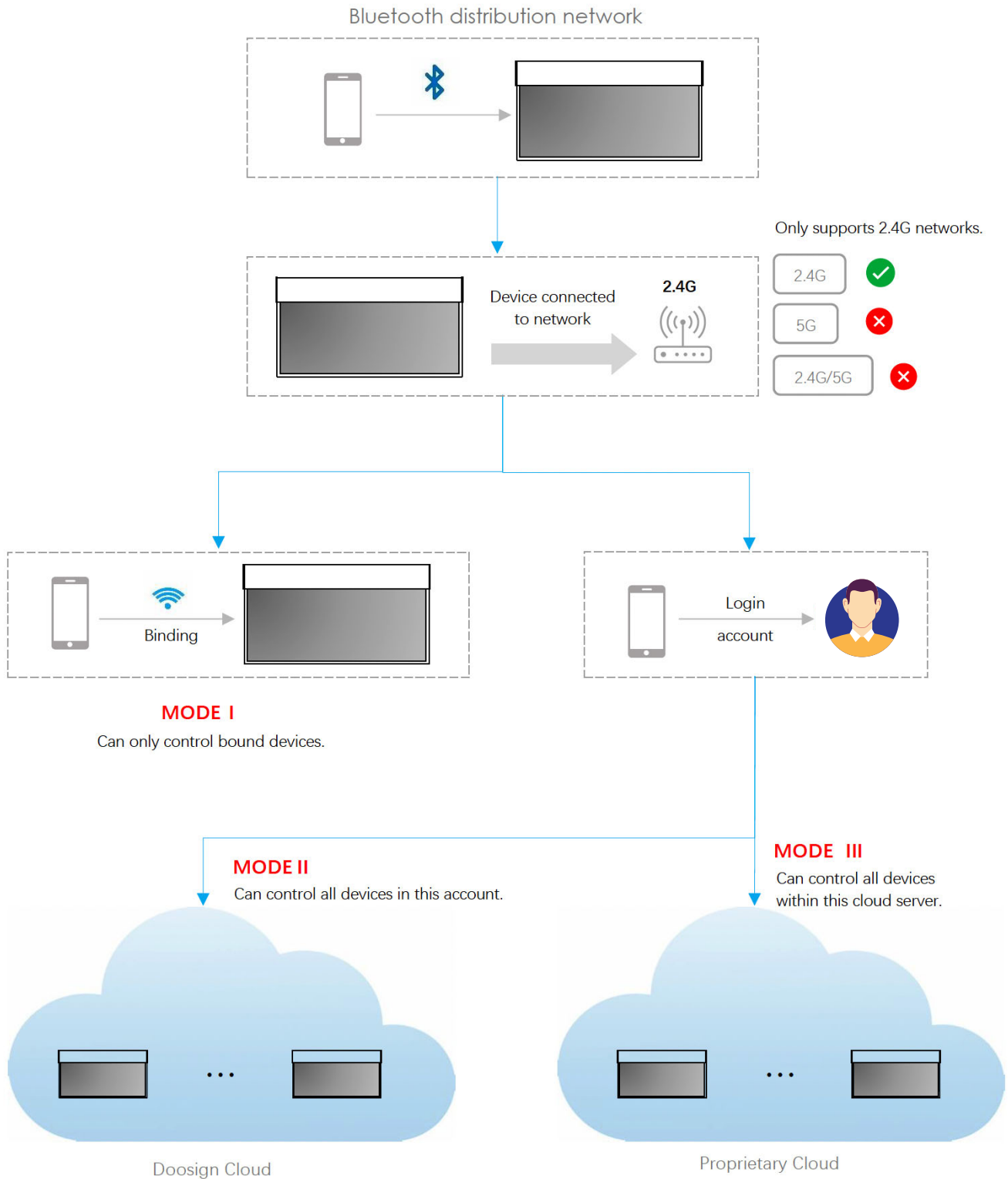


APPLICATION



CONTROL MODE

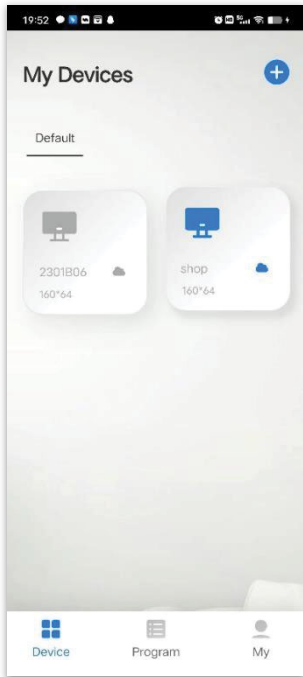
Three control modes are provided for the device.



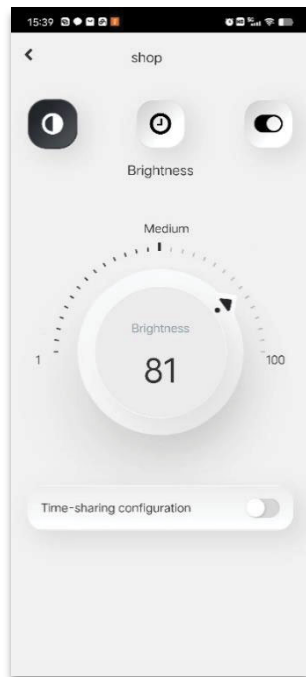
APP



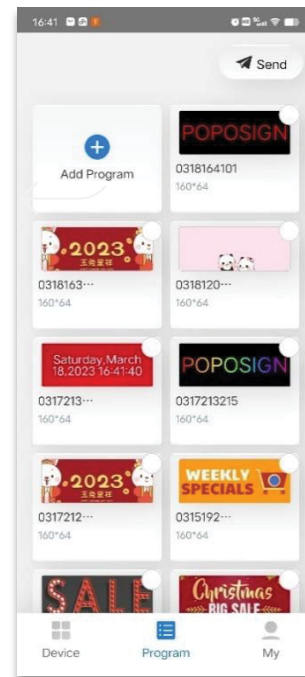
Add device



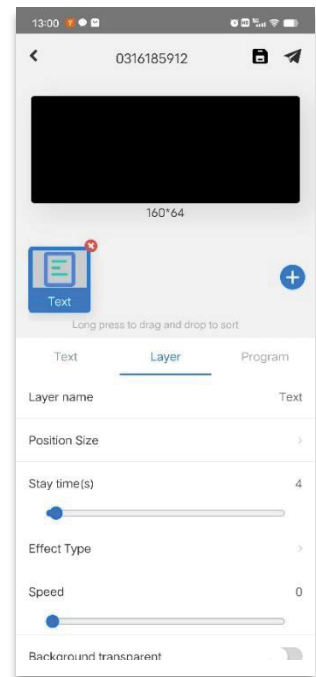
Device Control



Program Management



Program Editing



For detail, please refer to the software manual.



Keep an eye on www.powertechna.com for release updates and exclusive pre-order opportunities. Don't miss out on the chance to be among the first to elevate your business with our revolutionary LED technology!